



LANDMARK PINNACLE, CANARY WHARF, E14

£4,767 PCM

Presenting a luxurious newly-built flat to rent in Canary Wharf. The property is on Marsh Wall and comprises 2 bedrooms and 2 bathrooms.

LONG LET

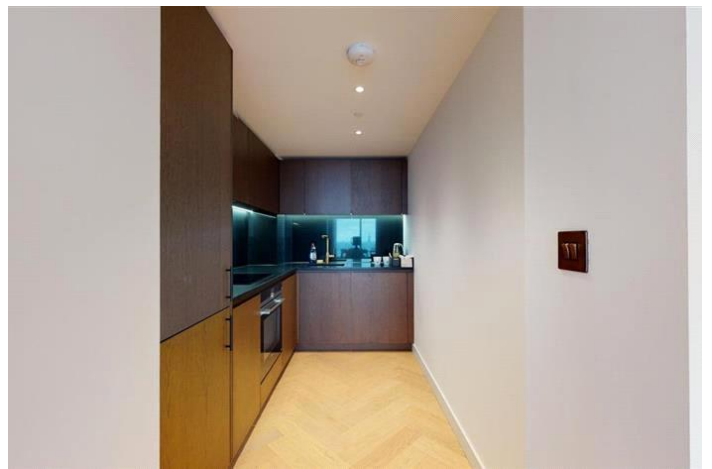
Available now, covering 1,147 sq. ft. in living space and situated on the sixty-sixth floor, this modern property is currently furnished and comes with big windows, high ceilings and ample storage. The property also benefits from wood floors, underfloor heating, and plenty of natural light throughout. Residents benefit from 24hr security. Further features and amenities;

- Air conditioning, a rare feature in London
- Great view of the surroundings
- Open plan kitchen with dishwasher
- Freezer
- Washer/Dryer
- Electric blinds
- Student-friendly
- Gym
- Group class
- Level 26 Winter garden
- Residents lounge games room
- Media room and cinema
- Level 56 private dining room
- Level 75 roof garden
- 1 x Secure parking space available at additional cost

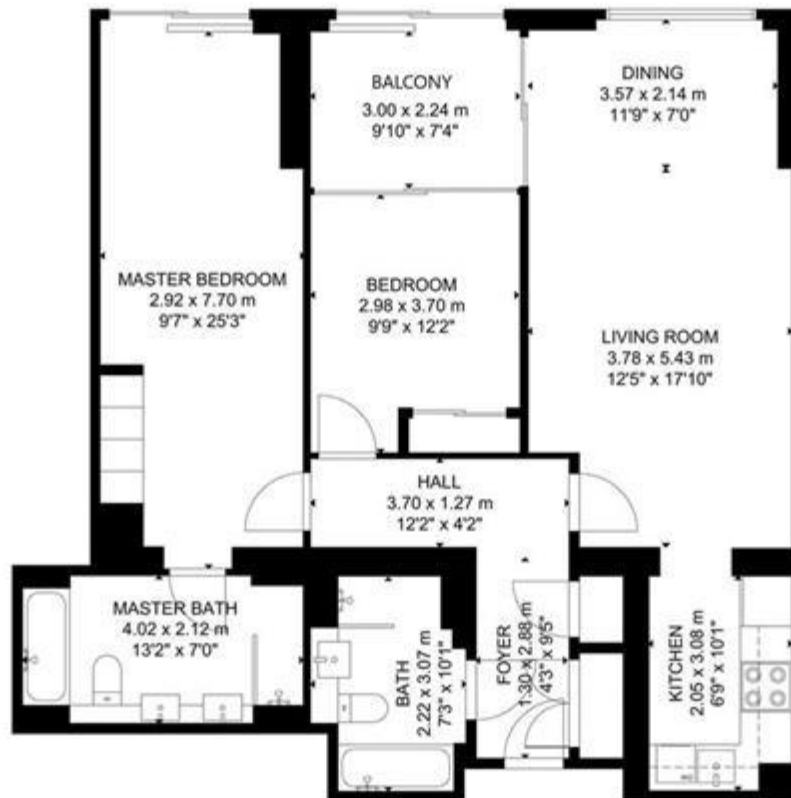
The flat has a current EPC rating of B and is under the Council Tax band G. Located on a quiet street and near the local amenities, the property is located only moments away from Canary Wharf station and close to the River Thames.

Furnished
Bills not included
EPC Rating: B

Council Tax Band: G (Tower Hamlet)
Deposit: £5,500
Holding Deposit: £1,100
Parking options: Off Street



LANDMARK PINNACLE, CANARY WHARF, E14
£4,767 PCM



SIXTY-SIXTH FLOOR

GROSS INTERNAL AREA
TOTAL: 107 m²/1,147 sq ft
SIXTY-SIXTH FLOOR: 107 m²/1,147 sq ft
SIZE AND DIMENSIONS ARE APPROXIMATE, ACTUAL MAY VARY.

Energy Efficiency Rating		
	Current	Potential
Very energy efficient - lower running costs		
(92-100) A		
(81-91) B	83	
(69-80) C		
(55-68) D		
(39-54) E		
(21-38) F		
(1-20) G		
Not energy efficient - higher running costs		
England & Wales EU Directive 2002/91/EC		

The energy efficiency rating is a measure of the overall efficiency of a home. The higher the rating the more energy efficient the home is and the lower the fuel bills will be.



Whilst every effort is made to ensure the accuracy of these details, it should be noted that the measurements are approximate only. Floorplans are for representation purposes only and prepared according to the RICS Code of Measuring Practice by our floorplan provider. Therefore, the layout of doors, windows and rooms are approximate and should be regarded as such by any prospective tenant.