

## SOVEREIGN COURT, POSTMARK, HOLBORN, WC1X

**£7,000 PCM**

Rare opportunity to rent-Beautiful 2 beds Penthouse, central London with walking distance to 4 tube stations and various amenities

- 24 Hours Concierge
- Available Now
- Close to Amenities
- Communal gardens
- Double Glazing
- Ensuite Bathroom
- Fully Furnished
- Garden

## LONG LET- 7th Floor 2 bed and 2 bath Penthouse

Known as "London's best kept secret" because of its central location, within walking distance to 4 major tube stations by foot in minutes you can reach Chancery Lane & Farringdon, Russell Square and King's Cross St Pancras which is "the" most well connect station in the UK with connections to 6 tube lines and Euro Star.

This amazing top-floor flat is located on 7th floor this 2 bed 2 bath is 1056sqft, is brand new furnished as seen in photo. You can enjoy the outstanding city view from your own spacious balcony which link the living room and two bedrooms together.

Within the apartment you have under floor heating and cooling, built in wardrobes and wine cooler as additional features.

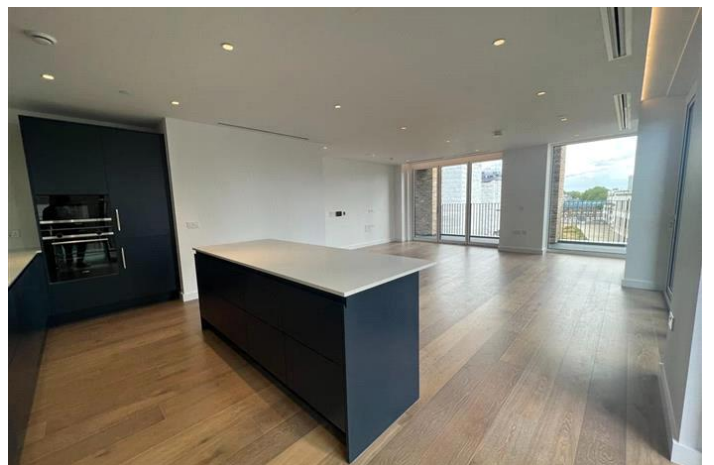
Building amenities include;  
24 hours concierge  
Cinema room  
Podium garden

A short walk to Rosebery Avenue and surrounding streets you have various cafes, supermarkets and restaurants to choose from.

London's Post Office sorting hub and collection points is right across the street.

Council Tax Band: G (Camden Council )  
Deposit: £7,500  
Holding Deposit: £1,500  
Garden details: Private Garden





SOVEREIGN COURT, POSTMARK, HOLBORN, WC1X  
£7,000 PCM



Energy Efficiency Rating		
	Current	Potential
Very energy efficient - lower running costs		
(92-100) <b>A</b>		
(81-91) <b>B</b>	83	
(69-80) <b>C</b>		
(55-68) <b>D</b>		
(39-54) <b>E</b>		
(21-38) <b>F</b>		
(1-20) <b>G</b>		
Not energy efficient - higher running costs		
<b>England &amp; Wales</b> EU Directive 2002/91/EC		
The energy efficiency rating is a measure of the overall efficiency of a home. The higher the rating the more energy efficient the home is and the lower the fuel bills will be.		



Whilst every effort is made to ensure the accuracy of these details, it should be noted that the measurements are approximate only. Floorplans are for representation purposes only and prepared according to the RICS Code of Measuring Practice by our floorplan provider. Therefore, the layout of doors, windows and rooms are approximate and should be regarded as such by any prospective tenant.